

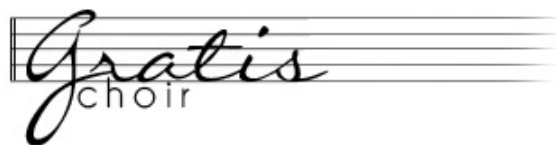
# Requiem

Gabriel Fauré

Opus 48

Orchestrated for String Quartet and Keyboard (Organ/Harp)  
by Jeremy Rawson

Keyboard (Organ/Harp)



# Requiem

Gabriel Fauré

## I Intriot et Kyrie

Molto Largo (♩=40)

Orchestration by Jeremy Rawson, 2022

Soprano

*pp* *sostenuto*

Re - qui - em ae - ter - nam do - na

Organ

*ff* *p* *ff* *p*

**A**

e - is do - mi - ne et lux per - pe - tu - a

*f* *sempre* *molto sostenuto*

lu - ce - at lu - ce - at

*p* *sff*

**B**

lu - ce - at e - is lu - c - at e - is.

*pp* *ppp*

*pp* *sempre*

Detailed description: This block contains the musical score for section B. It features a vocal line in the upper staff and organ accompaniment in the lower staves. The vocal line begins with a *pp* dynamic and includes the lyrics "lu - ce - at e - is lu - c - at e - is." The organ accompaniment starts with a *pp* dynamic and is marked *sempre*. The key signature has one flat, and the time signature is common time.

Andante moderato (♩=72)

Re - qui-em ae - ter - nam

(Tenors) *p dolce espressivo*

*p*

Detailed description: This block contains the first part of the second section. It features a vocal line in the upper staff and organ accompaniment in the lower staves. The vocal line is marked "(Tenors) *p dolce espressivo*" and includes the lyrics "Re - qui-em ae - ter - nam". The organ accompaniment starts with a *p* dynamic. The tempo is marked "Andante moderato" with a quarter note equal to 72 beats per minute. The key signature has one flat, and the time signature is common time.

**C**

do - na e - is do - mi - ne et lux per - pe - tu - a lu -

*f*

Detailed description: This block contains the musical score for section C. It features a vocal line in the upper staff and organ accompaniment in the lower staves. The vocal line includes the lyrics "do - na e - is do - mi - ne et lux per - pe - tu - a lu -". The organ accompaniment features a *f* dynamic. The key signature has one flat, and the time signature is common time.

ce - at e - is

*p*

Detailed description: This block contains the second part of the second section. It features a vocal line in the upper staff and organ accompaniment in the lower staves. The vocal line includes the lyrics "ce - at e - is". The organ accompaniment features a *p* dynamic. The key signature has one flat, and the time signature is common time.

**D**

re - qui-em ae - ter - nam do - na do - na e - is

do - mi-ne et lux per - pe - tu - a lu - ce - at e -

**E**

is

(Sopranos)  
Te de - cet hym - nus, De - us in Si - on

et ti - bu red - de - tur ro - tum in Je - ru - sa - lem.

The first system consists of a vocal line and organ accompaniment. The vocal line is in a soprano register, starting with a half note 'et' followed by a quarter note 'ti', then a half note 'bu' followed by a quarter note 'red', then a half note 'de' followed by a quarter note 'tur', then a half note 'ro' followed by a quarter note 'tum', then a half note 'in' followed by a quarter note 'Je', then a half note 'ru' followed by a quarter note 'sa', and finally a half note 'lem' followed by a quarter rest. The organ accompaniment features a treble and bass staff. The treble staff has a melodic line with a slur over the first two measures and a fermata over the last measure. The bass staff provides a harmonic accompaniment with chords and moving lines.

**F**  
ex - au - di, ex - au - di o - ra - ti - o - nem me - am

The second system begins with a section marker 'F' in a box. The vocal line starts with a half note 'ex' followed by a quarter note 'au', then a half note 'di' followed by a quarter note 'ex', then a half note 'au' followed by a quarter note 'di', then a half note 'o' followed by a quarter note 'ra', then a half note 'ti' followed by a quarter note 'o', then a half note 'nem' followed by a quarter note 'me', and finally a half note 'am' followed by a quarter rest. The organ accompaniment features a treble and bass staff. The treble staff has a melodic line with a slur over the first two measures and a fermata over the last measure. The bass staff provides a harmonic accompaniment with chords and moving lines. Dynamics include *ff* and *p*.

*ff* *sempre*  
ad te om - nis ca - ro ve - ni - et

The third system features a vocal line and organ accompaniment. The vocal line starts with a half note 'ad' followed by a quarter note 'te', then a half note 'om' followed by a quarter note 'nis', then a half note 'ca' followed by a quarter note 'ro', and finally a half note 've' followed by a quarter note 'ni' and a half note 'et' followed by a quarter rest. The organ accompaniment features a treble and bass staff. The treble staff has a melodic line with a slur over the first two measures and a fermata over the last measure. The bass staff provides a harmonic accompaniment with chords and moving lines. Dynamics include *ff* and *sempre*.

*dim.* *p* *p* **G**  
om - nis ca - ro ve - ni - et

The fourth system begins with a section marker 'G' in a box. The vocal line starts with a half note 'om' followed by a quarter note 'nis', then a half note 'ca' followed by a quarter note 'ro', then a half note 've' followed by a quarter note 'ni', and finally a half note 'et' followed by a quarter rest. The organ accompaniment features a treble and bass staff. The treble staff has a melodic line with a slur over the first two measures and a fermata over the last measure. The bass staff provides a harmonic accompaniment with chords and moving lines. Dynamics include *dim.*, *p*, and *pp*.

*p dolce espressivo*

Ky - ri - e Ky - ri - e Ky - ri - e e -

**H**

*cresc.* *f*

le - i - son Ky - i - e e - ls - i - son e - ls - i - son e -

*cresc.* *f*

*p* *ff* *p* *ff*

le - i - son Chris - te Chris - te Chris - te e -

*p* *ff* *p* *ff*

**J** *sempre p*

*p*

le - i - son Chris - te Chris - te e - le - i -

*p* *p*

son e - le - i - son

*pp*

*mf* *p*

Detailed description: This system contains the first two staves of music. The vocal line (top staff) begins with a whole rest, followed by a half note 'son' on a whole rest, and then a half note 'e' on a whole rest, a quarter note 'le' on a whole rest, a quarter note 'i' on a whole rest, and a half note 'son' on a whole rest. The piano accompaniment (bottom two staves) starts with a whole rest, followed by a half note chord, a quarter note chord, and a half note chord. The dynamic markings *mf* and *p* are placed above the piano staff.

**K** e - le - i - son

*pp*

*mf* *p* *pp* *sempre al fine*

Detailed description: This system contains the next two staves of music. A box containing the letter 'K' is positioned above the vocal line. The vocal line continues with a half note 'e' on a whole rest, a quarter note 'le' on a whole rest, a quarter note 'i' on a whole rest, and a half note 'son' on a whole rest. The piano accompaniment continues with a half note chord, a quarter note chord, and a half note chord. The dynamic markings *mf*, *p*, and *pp* are placed above the piano staff, with the instruction *sempre al fine* following the *pp* marking.

e - le - i - son

*pp*

Detailed description: This system contains the final two staves of music. The vocal line continues with a half note 'e' on a whole rest, a quarter note 'le' on a whole rest, a quarter note 'i' on a whole rest, and a half note 'son' on a whole rest. The piano accompaniment continues with a half note chord, a quarter note chord, and a half note chord. The dynamic marking *pp* is placed above the piano staff.

## II Offertoire

Adagio molto (♩ = 48)

**A**

(Alto)

Voices

Organ

a - ni-mas de - fac - to - rum\_\_ de poe-nis in fer - ni\_\_ et de-pro -

**B**

*pp sempre*

fun-do la - cu\_ O do-mi - ne Je-su Chris-te rex glo-ri-ae\_ li-be-ra a-ni-mas de - func - to-rum\_\_ de o-re le - o - nis\_ ne ab -

**C**

sor-be-at Tar - ta - rus\_\_ O do - mi - ne Je - su Chris - te rex glo - ri-ae\_\_ O do - mi -

ne Je - su Chris - te\_\_ ne ca -



**D**

Musical score for section D. The vocal line (top staff) begins with a rest, followed by the lyrics "dant in obs - cu - rum". The organ accompaniment (middle and bottom staves) starts with a rest, then enters with a forte (*f*) dynamic, gradually softening to piano (*p*) and then returning to forte (*f*) in the final measure.

**Andante moderato** (♩=63)

Musical score for section D, continuing from the previous system. The vocal line (top staff) has the lyrics "Hos - ti - as". The organ accompaniment (middle and bottom staves) features a piano (*p*) dynamic in the first measure, a forte (*f*) dynamic in the second, and a piano (*p*) dynamic in the third. The final measure is marked piano-piano (*pp*) and includes a 3/4 time signature change.

Musical score for section D, continuing from the previous system. The vocal line (top staff) has the lyrics "et pre - ces ti - bi do - mi - ne Lau -". The organ accompaniment (middle and bottom staves) continues with a steady accompaniment pattern.

**E**

Musical score for section E. The vocal line (top staff) has the lyrics "dis of - fe - ri - mus tu sus - ci - pe". The organ accompaniment (middle and bottom staves) features a mezzo-forte (*mf*) dynamic in the second measure.

pro a - ni - ma - bus il - lis *p dolce* qua - rum ho - di - e

me - mo - ri - am *mf* fa - ci - mus *p*

**F**

fac - e - *p*

as fac - e - as do - mi - ne de mor - te tran - si - re *p*

G

ad vi - tam \_\_\_\_\_ *meno p* \_\_\_\_\_ quam \_\_\_\_\_ o - lim A - bra - hae \_\_\_\_\_

H

pro - mi - sis - ti \_\_\_\_\_ pro - mi - sis -

ti at se - mi - ni \_\_\_\_\_ e - - us \_\_\_\_\_

1° Tempo adagio molto ( =48)

(Sopranos) *pp* O do - mi - ne Je - su Chris - te rex glo - ri -

*dolce*

J

ae li - be - ra a - ni - mas de func - to - rum de poe - nis in - fer - - ni, de poe - nis in

K

fer - ni et de pro - fun - do la - cu - Ne ca - dant in ob - scu -

rum - A - - men A - - - - -

- men A - men - - - - -

Switch to Harp for Movement III

## III Sanctus

Andante moderato (♩=60)

Harp

(Sopranos) *pp*  
Sanc - tus - - sanc - - tus - -

(Tenors) *pp*  
Sanc - tus - - sanc - -

Sanc - tus - - do - mi - nus - -

tus - - Sanc - tus - - do - mi -

**A**

do - mi - nus de - us

nus do - mi - nus de -

*p* de - us Sa - ba - oth

us *p* de - us Sa - ba -

**B**

*p* Sanc - tus Do - mi - nus de - us

oth

(Tenors) *pp*

De - us de - us Sa - ba - oth

C

(Sopranos) *sempre dolce*

Ple - ni sunt coe - li et ter - ra

(Tenors) *sempre dolce*

Glo - ri - a glo - ri - a tu - a

D

(Sopranos)

Ho - san - na in ex - cel - sis

E

*poco a poco cresc.*

Ho - sa - na in ex - cel - sis.

*poco a poco cresc.*

*f* *ff*

(Tenors) *ff*

Ho - san - na in ex - cel - sis

(Sopranos) *ff* *dim.*

Ho - san - na in ex - cel - sis

in ex - cel - sis

*p*

*p* *pp* *pp*

in ex - cel - sis Sanc -

*pp*



Musical score for Harp, first system. The top staff contains a vocal line with the word "tus" and a long underline. The bottom two staves show a piano accompaniment with a continuous eighth-note arpeggiated pattern in the right hand and rests in the left hand.

Musical score for Harp, second system. The piano accompaniment continues with the arpeggiated pattern in the right hand and rests in the left hand. The system concludes with a double bar line and repeat signs on both staves.

Switch to Organ for Movement IV

## IV Pie Jesu

**Adagio** (♩=44)

Soprano

*p*

Pi - e Je - su Do - mi - ne do - na e - is

Organ

*p dolce*

re - qui - em do - na e - is re - qui - em

**A**

*mf*

Pi - e Je - su do - mi - ne do - na e - is

*mp*

re - qui - em do - na e - is re - qui - em

**B** *p dolce*  
do - na e - is do - mi - ne do - na e - is re - qui - em

*sempre legato*

*pp*

*poco cresc.* **C** *p*  
sem - pi - ter - nam re - qui - em sem - pi - ter - nam re - qui - em

*poco cresc.* *pp*

**D** *mf*  
sem - pi - ter - nam re - qui - em Pi - e Pi - e Je - su

*mf*

Pi - e Je - su Do - mi - ne do - na e - is do - na e - is

The first system consists of a vocal line and organ accompaniment. The vocal line is in a soprano clef with a key signature of two flats and a 4/4 time signature. The lyrics are: "Pi - e Je - su Do - mi - ne do - na e - is do - na e - is". The organ accompaniment is in a grand staff (treble and bass clefs) with a key signature of two flats and a 4/4 time signature. The right hand plays a melodic line with eighth and sixteenth notes, while the left hand provides a harmonic accompaniment with chords and moving lines.

**E** sem - pi - ter - nam re - qui - em sem - pi - ter - nam re - qui - em. *poco rit.*

*pp* *sempre pp*

The second system continues the musical score. It begins with a section marker 'E' in a box. The vocal line continues with the lyrics: "sem - pi - ter - nam re - qui - em sem - pi - ter - nam re - qui - em.". The organ accompaniment includes dynamic markings: *pp* (pianissimo) in the first measure and *sempre pp* (pianissimo) in the third measure. The tempo marking *poco rit.* (poco ritardando) is placed above the final measure of the system. The organ accompaniment features a steady eighth-note pattern in the left hand and a more melodic line in the right hand.

## V Agnus Dei

Andante (♩=69)

Organ

*p*

*poco a poco cresc.*

T (Tenors) *p dolce espress.*

Ag - nus

Org *f*

*p sempre*

T De - i qui tol - lis pe - ca - ta mun -

Org

A

T di - do - na e - is do - na e - is

Org *poco cresc.*

**B**

Organ

T (Sopranos) *f*

re - qui - em \_\_\_\_\_ Ag - nus

Org

*p* *f* *p*

S *p* *f*

de - i Ag - nus de - - is \_\_\_\_\_ qui tol - lis

Org

*f* *p*

**C**

S *p* *f*

pec - ca - ta mun - - di do - na \_\_\_\_\_

Org

*f*

S (Tenors) *espress.*

do - na e - is re - qui - em \_\_\_\_\_ Ag - nus

Org

*p*

T  
de - i qui tol - lis pec - ca - ta mun - di do -

Org

**D**

T  
na - do - na e - is re - qui - em

Org

S  
sem - pi - ter - nam re - qui - em Lux

Org

*p dolce*

(Sopranos) *dolce sempre*  
*p*

**E**

S  
ae - ter - na lu - ce - at e - is lu - ce - at

Org

*p dolce*

S *dolce sempre*  
e - is do - - i - ne cum sanc - tis

Org *p*

S  
tu - is in ae - ter - nam qui - a pi - us

Org

S **F** *cresc.* *molto*  
pi - - us es cum sanc - tis tu - is

Org

S *f sempre*  
in ae - ter - nam qui - a pi -

Org *f*



G

S  
us es

Org  
*ff* *sempre*  
Molto largo (♩ = 40)

S  
Re - qui - em ae -

Org  
*pp*

H

S  
ter - nam do - na e - is do - mi - ne. Et lux per -

Org  
*pp* *mf*

S  
pe - tu - a lu - ce - at lu - ce - at lu - ce - at

Org  
*f* *dim.* *mf* *p* *pp*

I° Tempo (♩=72)

S

e - is.

Org

*p*

Org

*f*

*p*

### VI Libera Me

Moderato (♩=60)

Bass

*Solo p*

Li - be - ra me Do - mi-ne

Organ

*p*

*stacc.*

de mor - te ae - ter - na In di - e il - la tre -

**A**

men - da in di-e il - - - la Quan - do coe - li mo -

**B**

ven - di sunt quan - do coe - li mo - ven - di sunt et ter - ra Dum

*cresc.* *f* *sempre*

ve - ne - ris ju - di - ca - - re sae - cu - lum per ig - nem

*poco rall.* *a tempo*

**C**

(Sopranos)

*pp*

Tre - mens, tre - mens fac - tus sum e -

*p*

**D***cresc.**f*

go et ti - me - o et ti - me - o Dum dis - cus - si - o ve - ne -

*cresc.* *f*

## Più mosso (♩. = 72)

rit at que ven - tu - ra i - ra

Di - es il - la Di - es i - rae Ca - la - mi - ta - tis

**E**  
et mi-se - ri - ae Di - es il - la di - es mag - na

**F**  
et a - ma - ra a - ma-ra val - de Re - qui - em ae -

ter - nam Do - na e - is Do - mi -

*cresc.*

ne Et lux per - pe - tu - a lu - ce - at

*f* *p* *sempre dolce*

**G** *p*

**H** Moderato (♩=60)

e - - - is lu - ce - at e - - -

*pp* (Altos/Basses)

*pp*

- - - is

*mf* *f*

(Tutti) *p dolce*

Li - be - ra me Do - mi - ne de mort - te ae - ter - na

**J** *sempre p*

In di - e il - la tre - men - da in di - e il -

*p* **K** *cresc.*

la Quan - do coe - li mo - ven - di sunt, quan - do

*f* *f sempre*

coe - li mo - ven - di sunt et ter - ra Dum ve - ne -

ris ju - di - ca - - - re sae - cu - lum per ig - nem.

The first system consists of a vocal line in a single treble clef and a piano accompaniment in grand staff (treble and bass clefs). The vocal line is in a minor key and contains the lyrics "ris ju - di - ca - - - re sae - cu - lum per ig - nem." The piano accompaniment features a steady bass line with chords in the right hand.

(Basses) *p*  
Li - be - ra me do - mi - ne de mor - - te ae -

The second system includes a bass line in a single bass clef and a piano accompaniment in grand staff. The bass line is marked "(Basses)" and "*p*". It contains the lyrics "Li - be - ra me do - mi - ne de mor - - te ae -". The piano accompaniment continues with chords and a bass line, marked with "*p*".

*pp*  
ter - na Li - be - ra me Do - mi - ne

The third system features a bass line in a single bass clef and a piano accompaniment in grand staff. The bass line is marked "*pp*" and contains the lyrics "ter - na Li - be - ra me Do - mi - ne". The piano accompaniment is marked with "*pp*" and concludes with a final chord.



### VII In Paradisum

Andante moderato (♩=58)

Soprano

Organ

*p dolce*

*p dolce*

In pa - ra -

di - - - sum De - du - cant

an - - ge - li in tu - o ad -

**A**

ven - tu sus - ci - pi - ant te mar - - ty - res

*sempre dolce* er per du - cen - te in ci - vi - ta - tem

sanc - tam Je - ru - sa - lem Je - ru - sa -

lem Je - ru - sa - lem Je -

ru - sa - lem Cho -

The first system consists of a vocal line and organ accompaniment. The vocal line is in a soprano register, with lyrics 'ru - sa - lem' and 'Cho -'. The organ accompaniment features a rhythmic pattern of eighth notes in the right hand and a bass line in the left hand.

rus an - ge - lo - rum te sus - ci - pi - at

The second system continues the vocal line and organ accompaniment. The vocal line has lyrics 'rus an - ge - lo - rum te sus - ci - pi - at'. The organ accompaniment maintains the same rhythmic pattern.

**D**

et cum La - za - ro quon - dam pau - pe -

The third system begins with a section marked 'D'. The vocal line has lyrics 'et cum La - za - ro quon - dam pau - pe -'. The organ accompaniment continues with the same rhythmic pattern.

re Et cum La - za - ro quon - dam

The fourth system continues the vocal line and organ accompaniment. The vocal line has lyrics 're Et cum La - za - ro quon - dam'. The organ accompaniment features a crescendo marking (*cresc.*) above the final measure.

**E**

*f* pau - pe - re ae - ter - nam ha - be - as *pp* Re - - -

*pp* - - - qui - em ae -

**F**

ter - nam ha - - be - as

Re - - - qui - em