

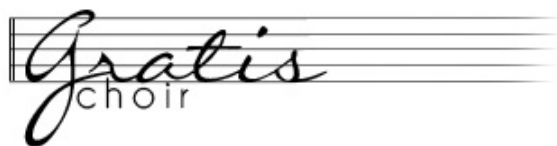
Requiem

Gabriel Fauré

Opus 48

Orchestrated for String Quartet and Keyboard (Organ/Harp)
by Jeremy Rawson

Viola



Requiem

Gabriel Fauré

I Intriot et Kyrie

Molto Largo (♩=40)

A

ff > *p* < *ff* > *p* *f* *sempre* *molto sostenuto*

B

p < *sf* > *p* *sempre*

Andante moderato (♩=72)

p *dolce espressivo*

C

f

p

D

f

sempre f *p*

E

ff

First musical staff, starting with a dynamic marking of *p* and the instruction *dolce sempre*. The staff contains a melodic line with various note values and rests.

Second musical staff, continuing the melodic line from the first staff, ending with a dynamic marking of *p*.

F

Third musical staff, marked with a box 'F'. It features dynamic markings of *ff*, *p*, *ff*, *p*, and *ff* *sempre*, with hairpins indicating crescendos and decrescendos.

G

Fourth musical staff, marked with a box 'G'. It includes dynamic markings of *dim.*, *p*, *pp*, and *p*.

H

Fifth musical staff, marked with a box 'H'. It features a dynamic marking of *cresc.* and a melodic line with slurs.

Sixth musical staff, starting with a dynamic marking of *f*. It includes dynamic markings of *p*, *ff*, and *p*, with hairpins and slurs.

J

Seventh musical staff, marked with a box 'J'. It features dynamic markings of *ff*, *p*, and *p*.

Eighth musical staff, starting with a dynamic marking of *p*. It includes dynamic markings of *mf*, *p*, and *pp*, with hairpins and slurs.

K

Ninth musical staff, marked with a box 'K'. It features dynamic markings of *mf*, *p*, and *pp* *sempre al fine*, with hairpins and slurs.

Tenth musical staff, concluding the piece with a final melodic line and a fermata over the final note.

II Offertoire

Adagio molto (♩=48)

First staff of music, starting with a whole rest, followed by a melodic line. Dynamics: *p* *espressivo*

Second staff of music, continuing the melodic line. Dynamics: *f*, *ff*, *p*

A

Third staff of music, featuring a rhythmic pattern of eighth notes. Dynamics: *pp*

Fourth staff of music, continuing the rhythmic pattern. Dynamics: *pp*

B

4

Fifth staff of music, featuring a rhythmic pattern of eighth notes. Dynamics: *pp*

C

Sixth staff of music, continuing the rhythmic pattern. Dynamics: *p*

Seventh staff of music, featuring a melodic line. Dynamics: *f*, *p*, *f*, *p*

D

Eighth staff of music, continuing the melodic line. Dynamics: *f*, *p*, *f*

Andante moderato (♩=63)

Ninth staff of music, starting with a whole rest, followed by a melodic line. Dynamics: *ff*, *p*, *pp*

Tenth staff of music, continuing the melodic line.

E

mf

pp

mf *pp*

F

pp

G

p *pp*

H

p espressivo *f* *p* *pp*

espress.

mf *pp*

1° Tempo adagio molto (=48)

J

pp *f*

K

p *pp*

III Sanctus

Andante moderato (♩ = 60)

pp

A

B

pp

C

D

poco a poco cresc.

E

f ff

sempre

pizz.

p

arco

pp

IV Pie Jesu

Adagio (♩=44)

7

pp

A

5

p

B

pp

poco cresc.

pp

C

D

mf

E

pp

sempre pp

poco rit.

V Agnus Dei

Andante (♩=69)

p poco a poco cresc. *f* *p* sempre

A poco cresc.

p *f*

B *p* *f*

p *f*

C *p* *espress.*

D *p* *p*

E

p dolce

F

cresc. molto f

G

ff sempre **Molto largo** (♩=40)

H

ff p ff f **1° Tempo** (♩=72)

pp

f p

VI Libera Me

Moderato (♩=60)

8 A

p *p* *p*

Staff A: Treble clef, 3/4 time signature. Starts with a whole rest for 8 measures. Then a half note G3, quarter note A3, quarter note B3. A slur covers a half note C4, quarter note D4, quarter note E4. Dynamics: *p* (under G3), *p* (under C4), *p* (under E4).

B 5 *poco rall.* *a tempo*

f *sempre*

Staff B: Treble clef, 3/4 time signature. Starts with a whole rest for 5 measures. Then a half note G3, quarter note A3, quarter note B3. A slur covers a half note C4, quarter note D4, quarter note E4. Dynamics: *f* (under G3), *sempre* (under C4).

C

pp

Staff C: Treble clef, 3/4 time signature. Starts with a whole rest for 5 measures. Then a half note G3, quarter note A3, quarter note B3. A slur covers a half note C4, quarter note D4, quarter note E4. Dynamics: *pp* (under G3).

D

cresc. *f*

Staff D: Treble clef, 3/4 time signature. Starts with a whole rest for 5 measures. Then a half note G3, quarter note A3, quarter note B3. A slur covers a half note C4, quarter note D4, quarter note E4. Dynamics: *cresc.* (under C4), *f* (under E4).

Più mosso (♩.=72)

p $\frac{6}{4}$

p

Staff E (first part): Treble clef, 3/4 time signature. Starts with a whole rest for 5 measures. Then a half note G3, quarter note A3, quarter note B3. A slur covers a half note C4, quarter note D4, quarter note E4. Dynamics: *p* (under C4). Ends with a double bar line and a 6/4 time signature change.

ff

ff

Staff E (second part): Treble clef, 6/4 time signature. Starts with a whole rest for 2 measures. Then a half note G3, quarter note A3, quarter note B3. A slur covers a half note C4, quarter note D4, quarter note E4. Dynamics: *ff* (under G3), *ff* (under C4).

E *ff* *sempre*

ff *sempre*

Staff F: Treble clef, 6/4 time signature. Starts with a whole rest for 2 measures. Then a half note G3, quarter note A3, quarter note B3. A slur covers a half note C4, quarter note D4, quarter note E4. Dynamics: *ff* (under G3), *sempre* (under C4).

F *p*

p

Staff G: Treble clef, 6/4 time signature. Starts with a whole rest for 2 measures. Then a half note G3, quarter note A3, quarter note B3. A slur covers a half note C4, quarter note D4, quarter note E4. Dynamics: *p* (under C4).

cresc.

cresc.

Staff H: Treble clef, 6/4 time signature. Starts with a whole rest for 2 measures. Then a half note G3, quarter note A3, quarter note B3. A slur covers a half note C4, quarter note D4, quarter note E4. Dynamics: *cresc.* (under C4).

G *f* *p* *p dolce*

f *p* *p dolce*

Staff I: Treble clef, 6/4 time signature. Starts with a whole rest for 2 measures. Then a half note G3, quarter note A3, quarter note B3. A slur covers a half note C4, quarter note D4, quarter note E4. Dynamics: *f* (under G3), *p* (under C4), *p dolce* (under E4).

VII In Paradisum

Andante moderato (♩=58)

con sord.

p

A

B

C

f

pp

pp

D

cresc.

E

f

pp

F