

[Viola]

The Kindred Points of Heaven and Home

Three poems by William Wordsworth
Music by Jeremy Rawson

Moderately - $\text{♩} = 120$

Viola

Measures 1-6: *p*

Measure 7: *mf*

Measures 8-11: *f*

Measures 12-17: *mp*

Measures 18-22: *mf*

Measures 23-26: *f*

Measures 27-30: *mp*

Measures 31-36: *p*

Measures 37-41: *mf*

Measures 42-47: *f*

Measures 48-51: *mp*

Measures 52-55: *mf*

Measures 56-60: *p*

Measures 61-66: *mf*

Measures 67-73: *p*

Measure 74: *p*

Section A (Measures 37-41)

Section B (Measures 74-78)

6

[Viola]

⑧9

f

⑨6

ff

⑩3 C

p

⑪7

f

⑫6 D Slowly - $\text{♩} = 80 \text{ div.}$

ff *p* *pp*

⑬4

⑭3 unis. div. (etc.)

sempre pp

⑮3

⑯1 E

mp *mp* *mf*

⑰1 div. (etc.)

p *pp*

⑱3 F

mf

⑲1

[Viola]

(200) A little faster - $\text{♩} = 90$



(209)

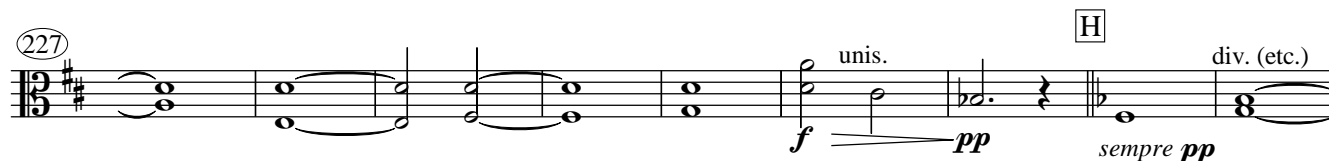


(217)

[G] Slowly - $\text{♩} = 80$



(227)

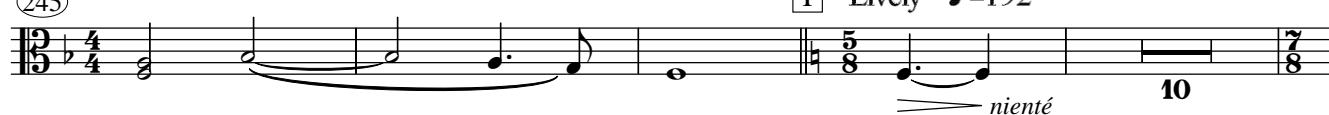


(236)



(245)

[I] Lively - $\text{♩} = 192$



(259)



(272)



(278)



(283)



289 K *pizz.*
 11 *mf*

308 *arco*
mf

316

323 L *pizz.*
mf

331

337

343 M *mf*

350

355